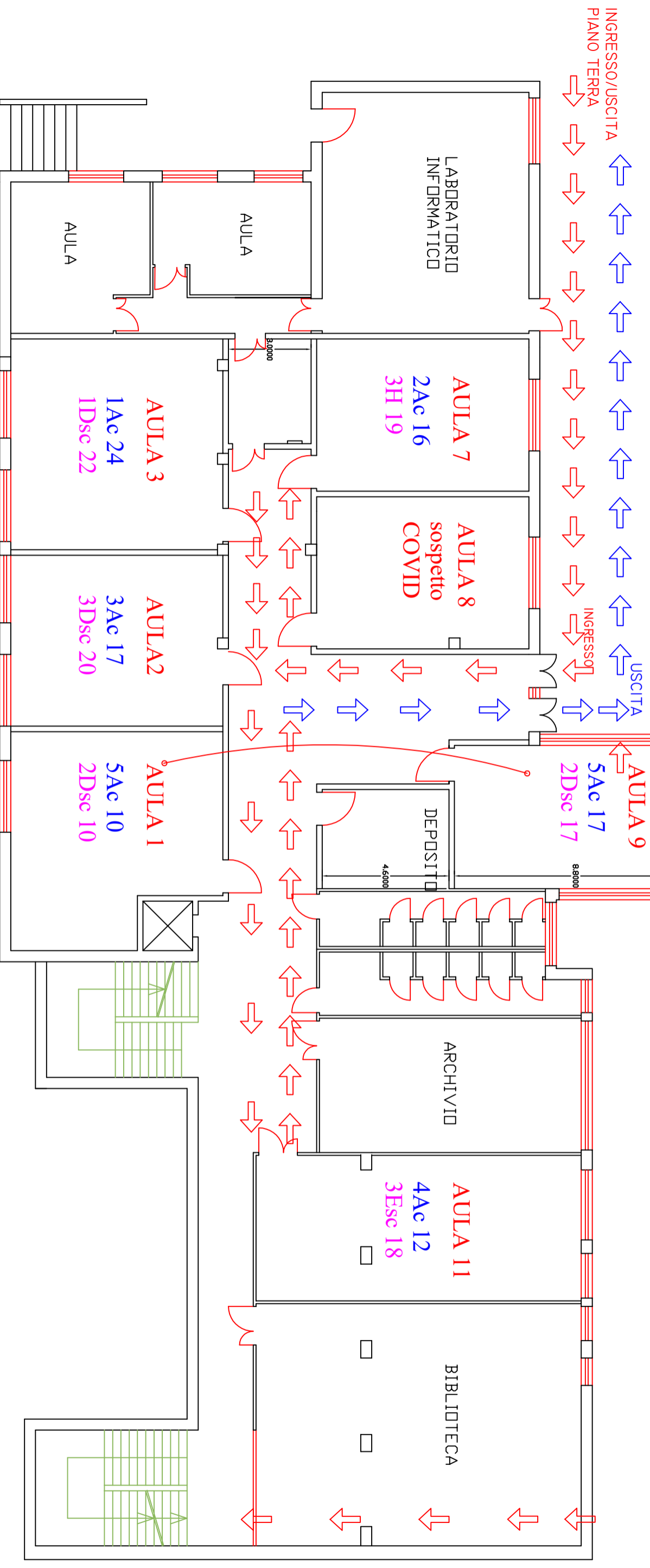
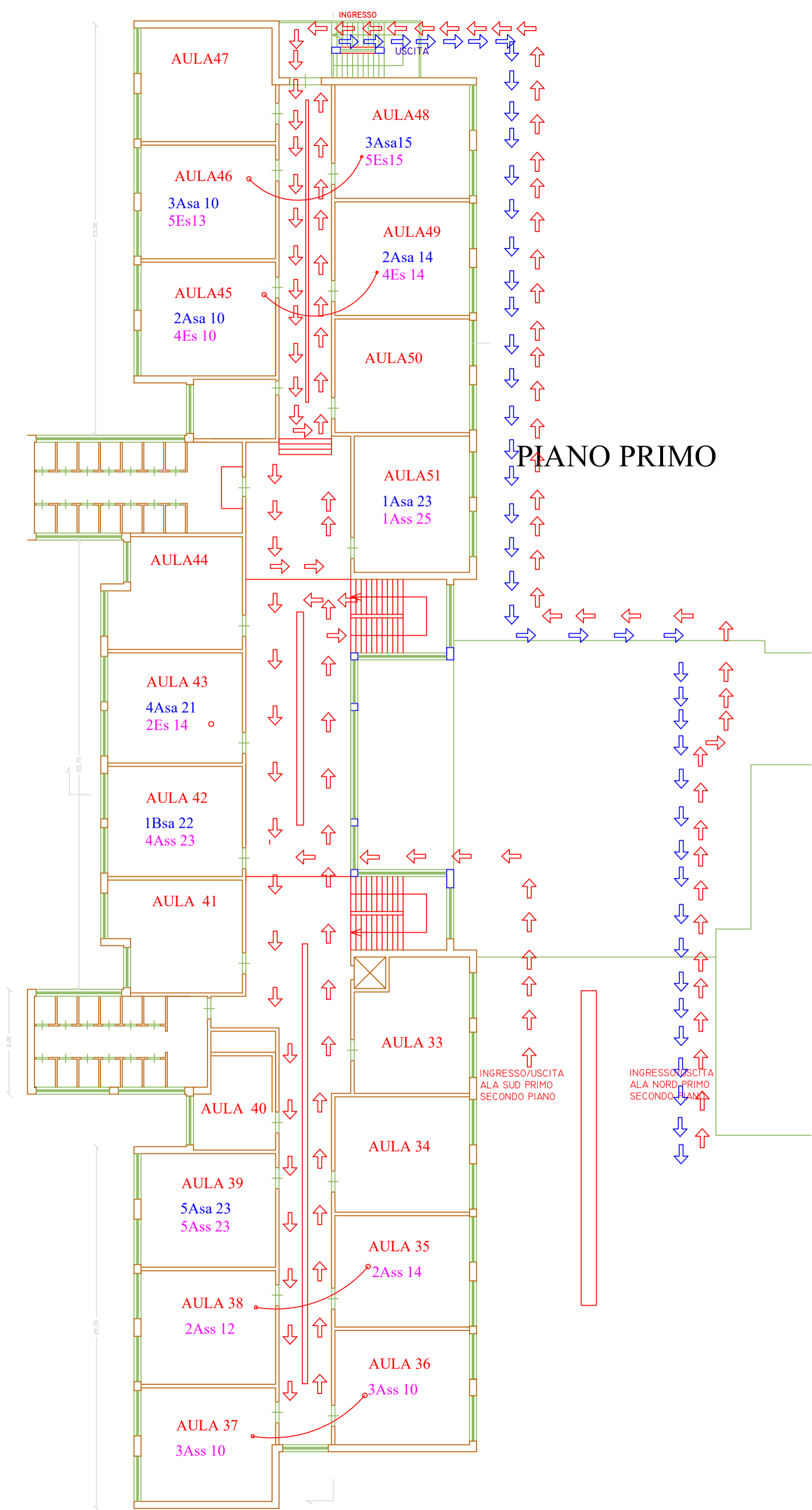
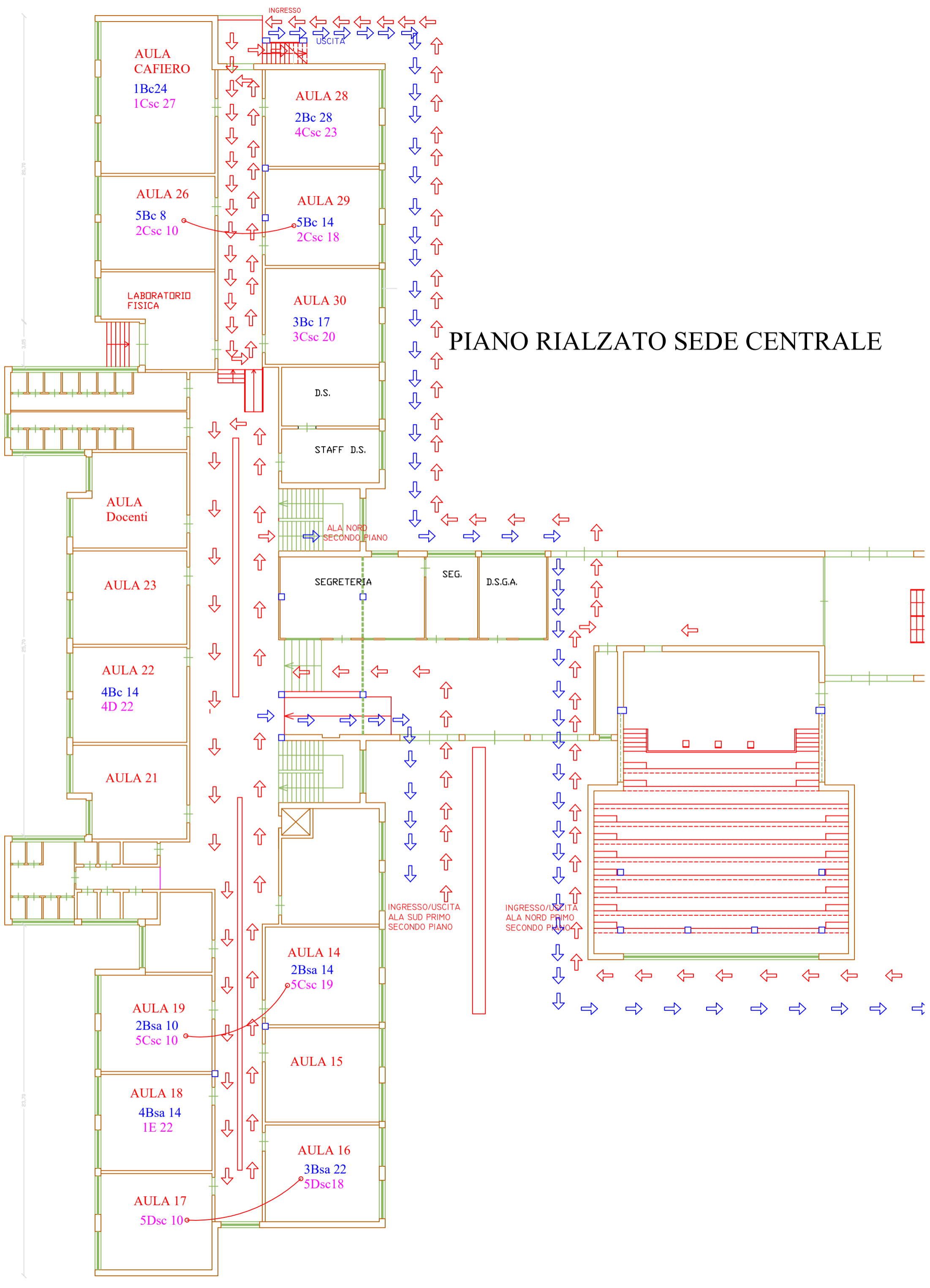


# PIANO TERRA SEDE CENTRALE







# PIANO RIALZATO SEDE CENTRALE

AULA  
CAFIERO  
1Bc24  
1Csc 27

AULA 28  
2Bc 28  
4Csc 23

AULA 26  
5Bc 8  
2Csc 10

AULA 29  
5Bc 14  
2Csc 18

LABORATORIO  
FISICA

AULA 30  
3Bc 17  
3Csc 20

D.S.

STAFF D.S.

AULA  
Docenti

ALA NORD  
SECONDO PIANO

SEGRETERIA

SEG.

D.S.G.A.

AULA 22  
4Bc 14  
4D 22

AULA 21

INGRESSO/USCITA  
ALA SUD PRIMO  
SECONDO PIANO

INGRESSO/USCITA  
ALA NORD PRIMO  
SECONDO PIANO

AULA 14  
2Bsa 14  
5Csc 19

AULA 19  
2Bsa 10  
5Csc 10

AULA 15

AULA 18  
4Bsa 14  
1E 22

AULA 16  
3Bsa 22  
5Dsc 18

AULA 17  
5Dsc 10

85,70

85,70

85,70

83,70